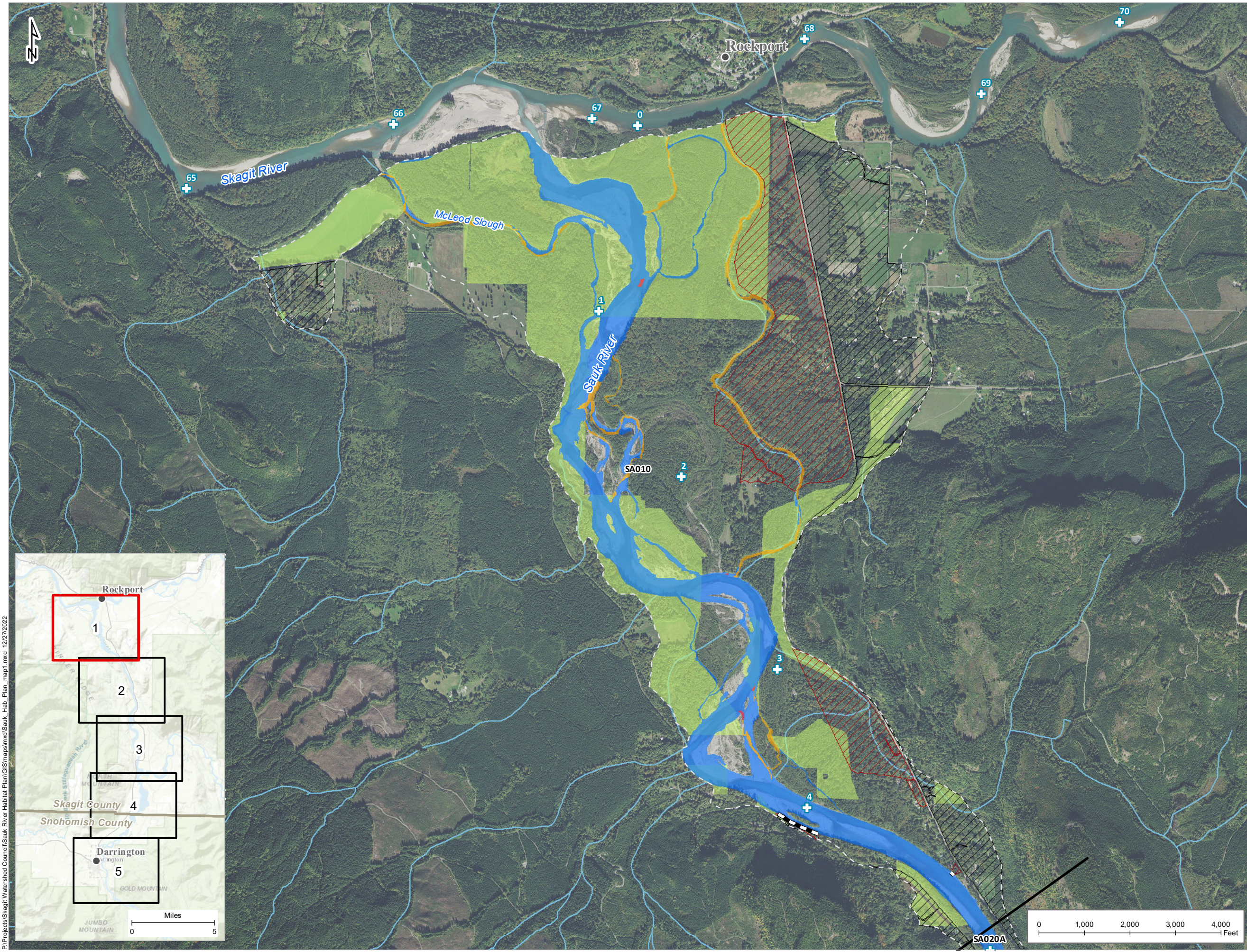
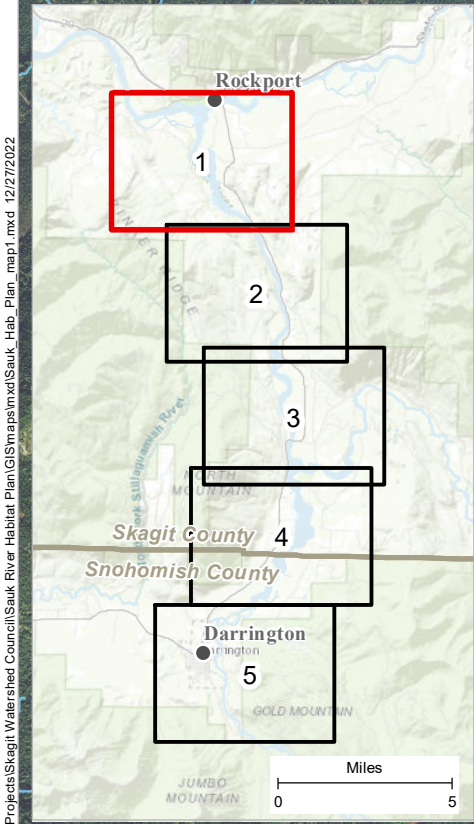


SAUK RIVER HABITAT PROTECTION AND RESTORATION PLAN

Map 1- Page 1. Priority Areas for
Protection of High Quality Habitats



- Stream Gauge (USGS)
- Tribal Reservation and Trust Lands
- City Limits
- Reach Breaks
- River Miles (USGS)
- Hydromodifications (USIT)
- River Channel
- Off-Channel Habitat
- Backwater Habitat
- Protected Land
- Isolated Habitat
- Shadowed Habitat

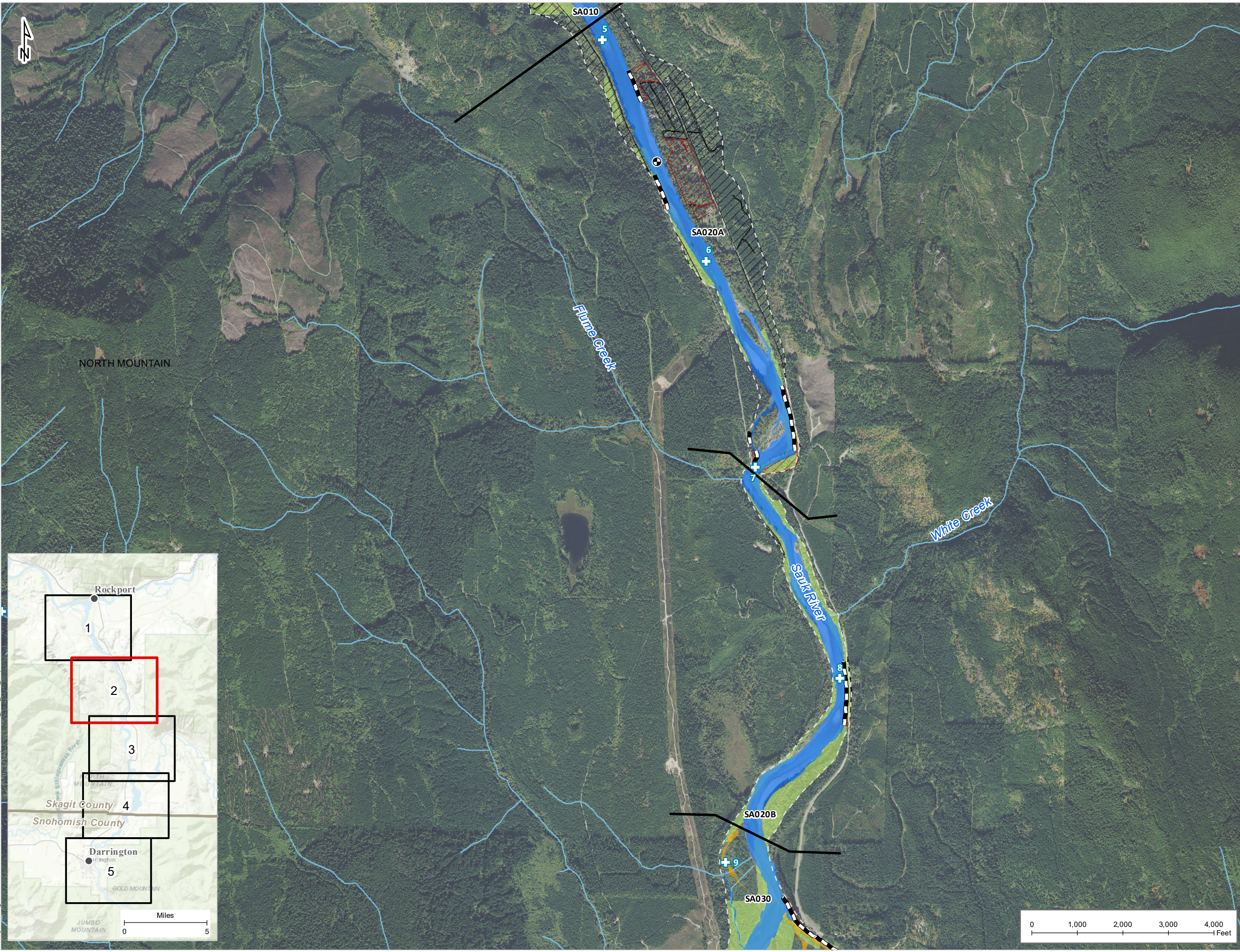


P:\Projects\Skagit Watershed Council\Skagit River Habitat Plan\GIS\Map\map1.mxd 12/27/2022

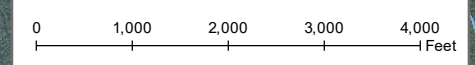
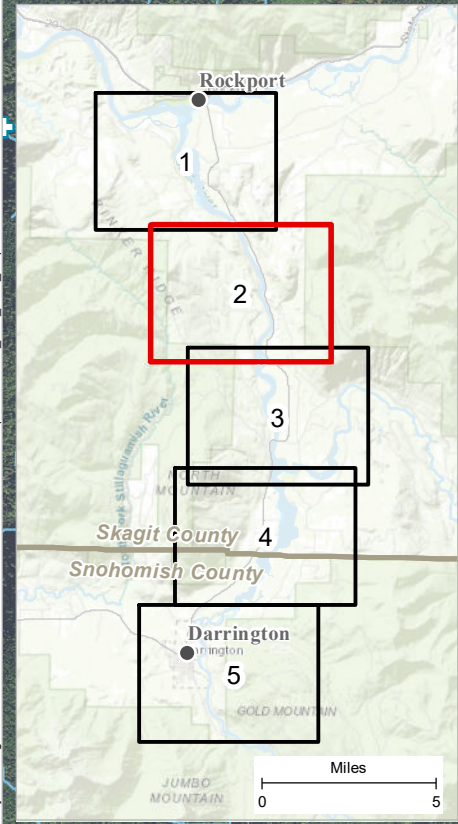


SAUK RIVER HABITAT PROTECTION AND RESTORATION PLAN

Map 1- Page 2. Priority Areas for
Protection of High Quality Habitats



- Stream Gage (USGS)
- Tribal Reservation and Trust Lands
- City Limits
- Reach Breaks
- River Miles (USGS)
- Hydromodifications (USIT)
- River Channel
- Off-Channel Habitat
- Backwater Habitat
- Protected Land
- Isolated Habitat
- Shadowed Habitat

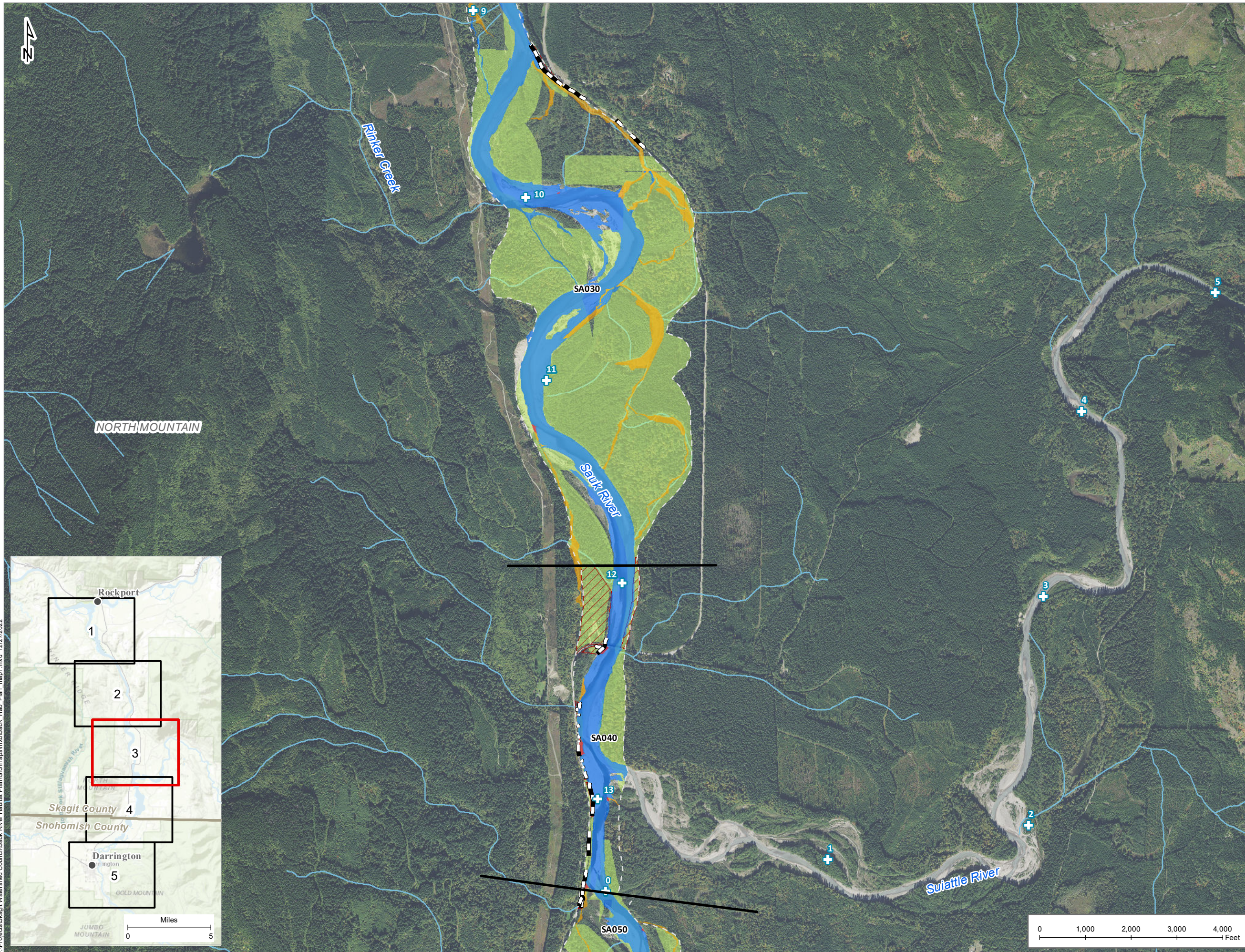


P:\Projects\Skagit Watershed Council\Skagit River Habitat Plan\GIS\maps\map1.mxd 12/27/2022



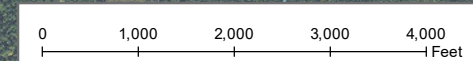
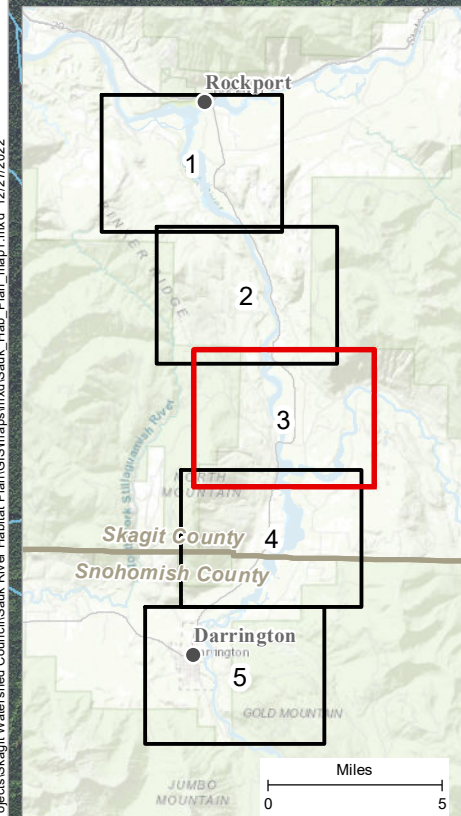
SAUK RIVER HABITAT PROTECTION AND RESTORATION PLAN

Map 1- Page 3. Priority Areas for
Protection of High Quality Habitats



- Stream Gage (USGS)
- Tribal Reservation and Trust Lands
- City Limits

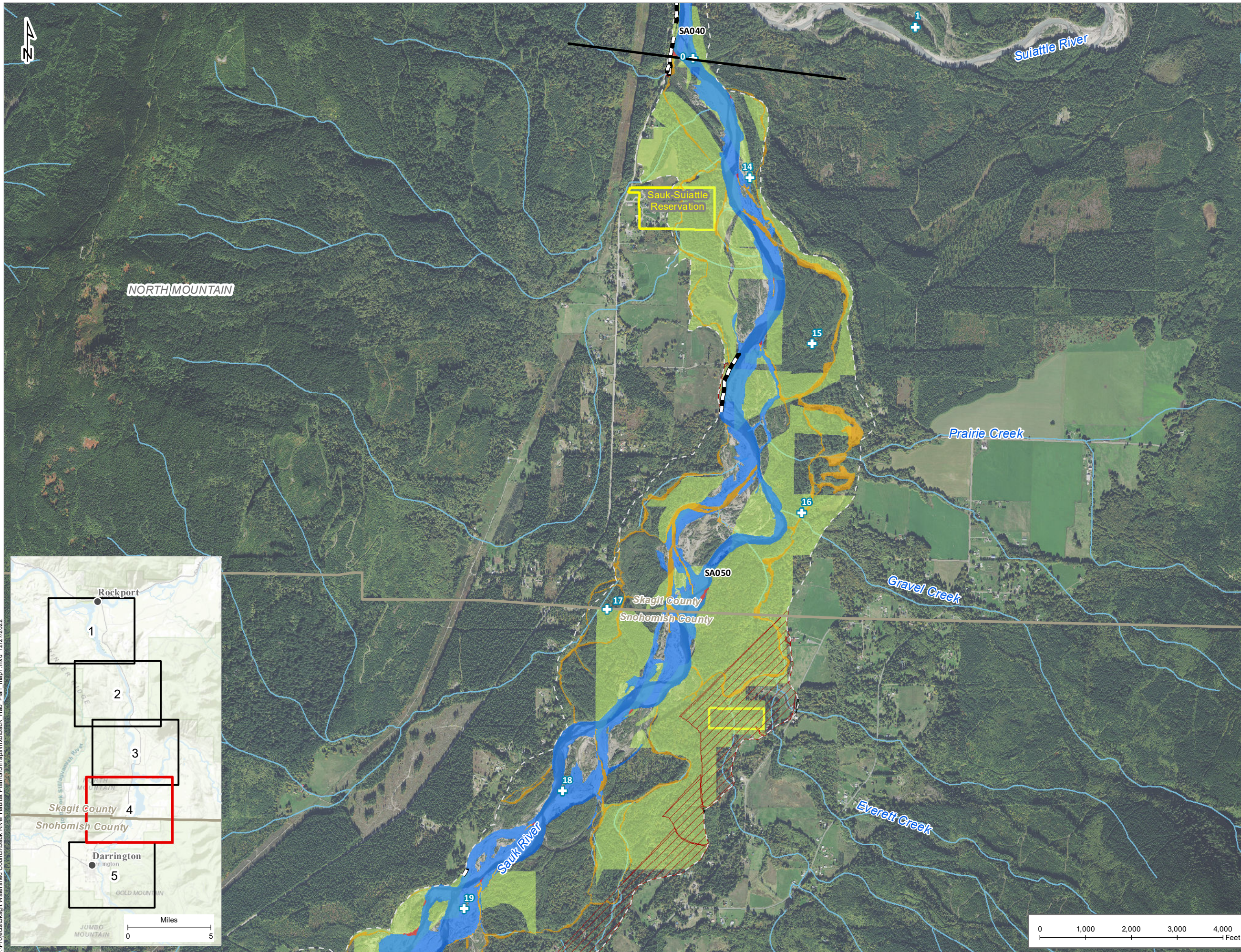
- Reach Breaks
- River Miles (USGS)
- Hydromodifications (USIT)
- River Channel
- Off-Channel Habitat
- Backwater Habitat
- Protected Land
- Isolated Habitat
- Shadowed Habitat





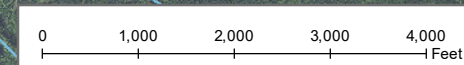
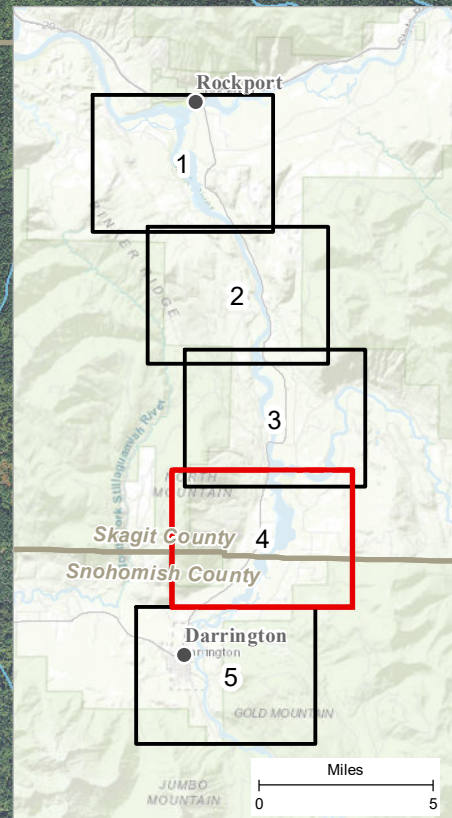
SAUK RIVER HABITAT PROTECTION AND RESTORATION PLAN

Map 1- Page 4. Priority Areas for
Protection of High Quality Habitats



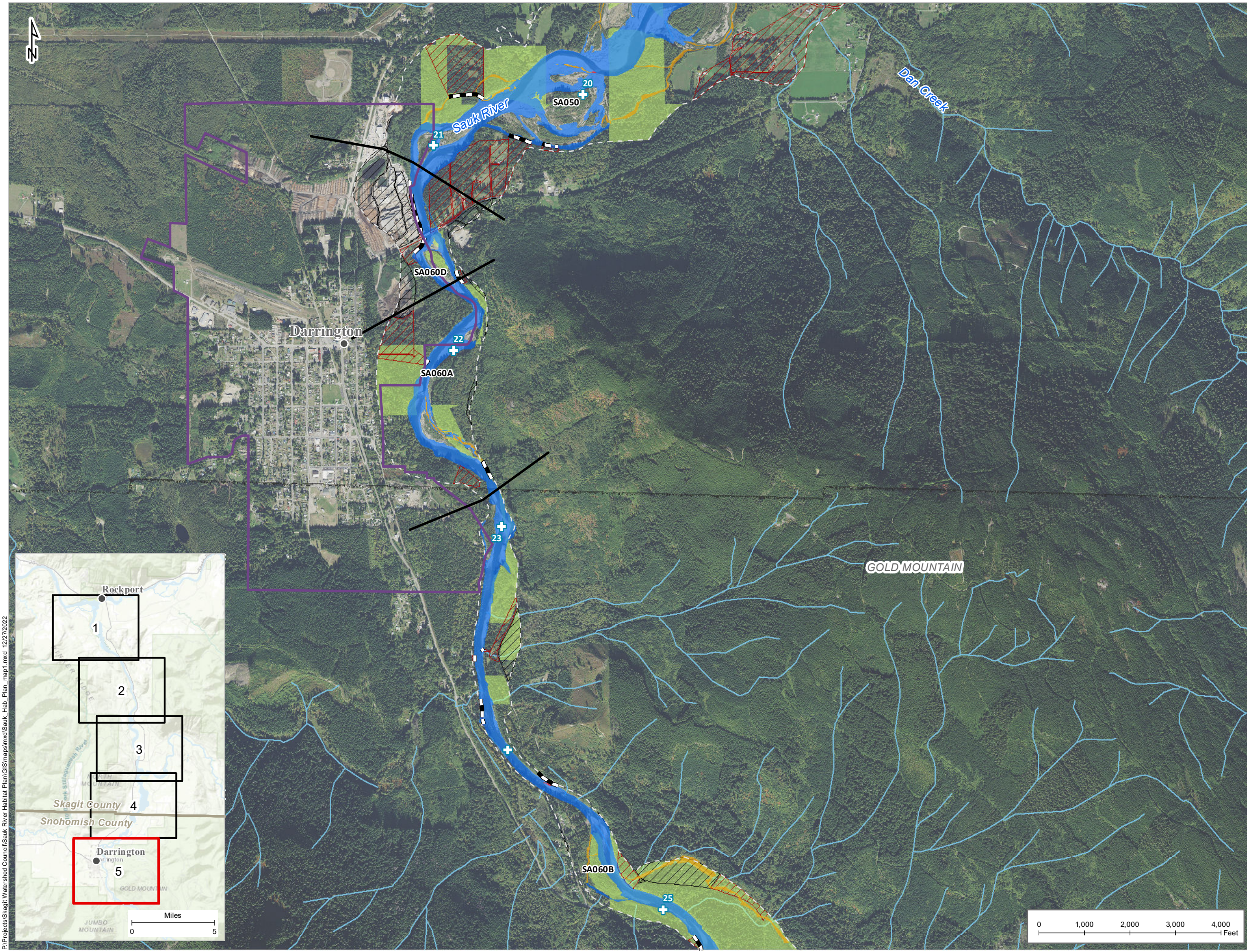
- Stream Gauge (USGS)
- Tribal Reservation and Trust Lands
- City Limits

- Reach Breaks
- River Miles (USGS)
- Hydromodifications (USIT)
- River Channel
- Off-Channel Habitat
- Backwater Habitat
- Protected Land
- Isolated Habitat
- Shadowed Habitat

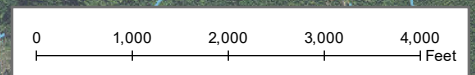
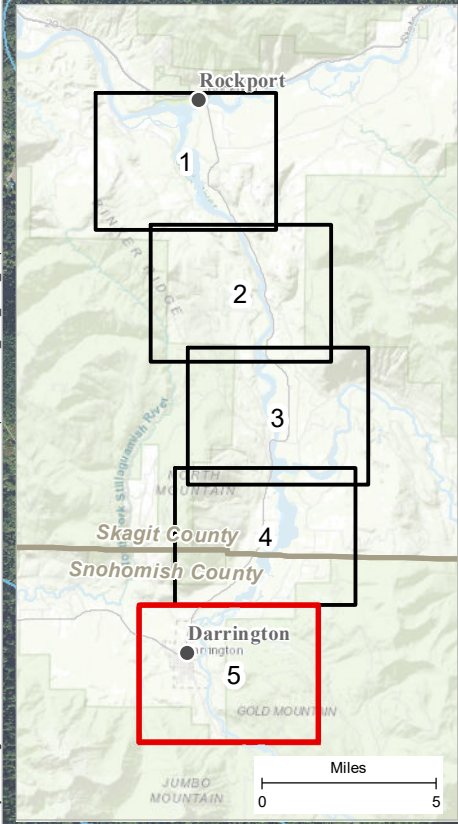


SAUK RIVER HABITAT PROTECTION AND RESTORATION PLAN

Map 1- Page 5. Priority Areas for
Protection of High Quality Habitats



- Stream Gage (USGS)
- Tribal Reservation and Trust Lands
- City Limits
- Reach Breaks
- River Miles (USGS)
- Hydromodifications (USIT)
- River Channel
- Off-Channel Habitat
- Backwater Habitat
- Protected Land
- Isolated Habitat
- Shadowed Habitat



P:\Projects\Skagit Watershed Council\Skagit River Habitat Plan\GIS\maps\map1\map1.mxd 12/27/2022