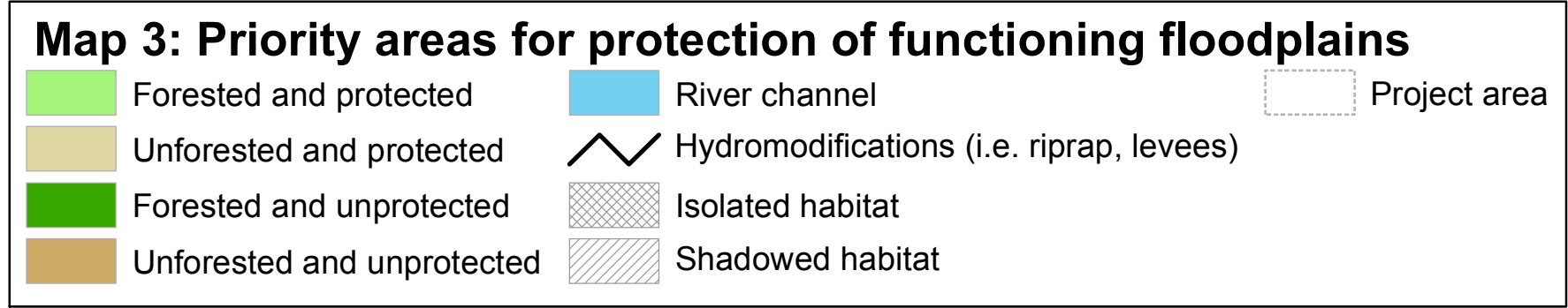
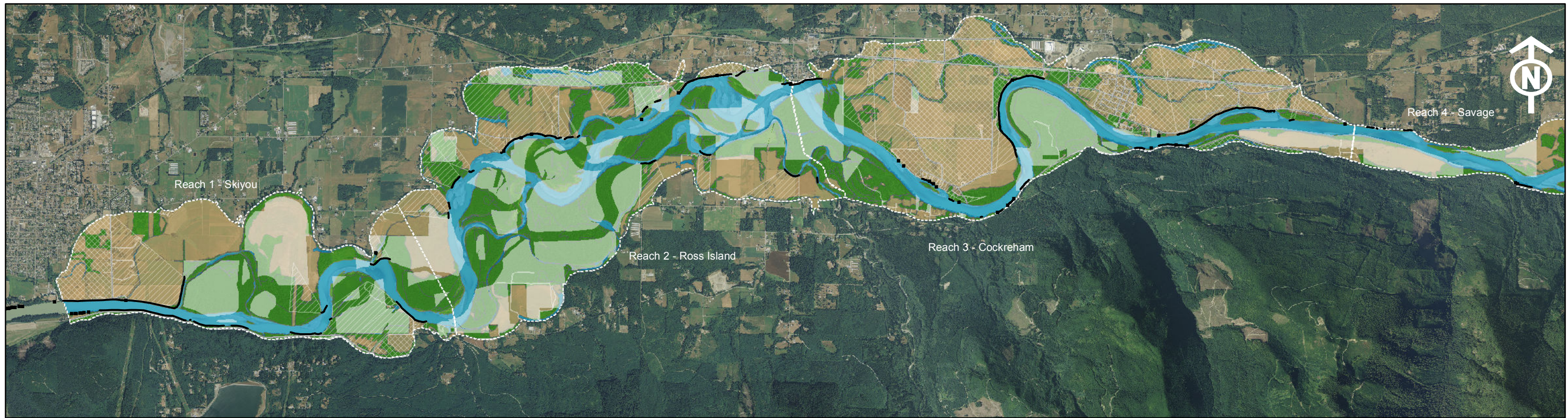
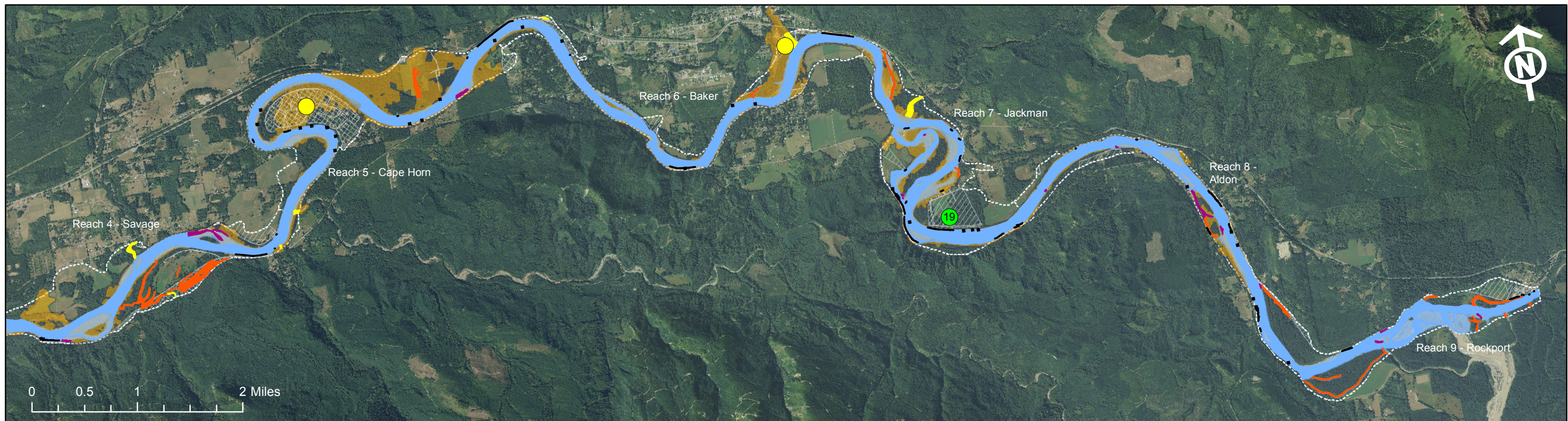
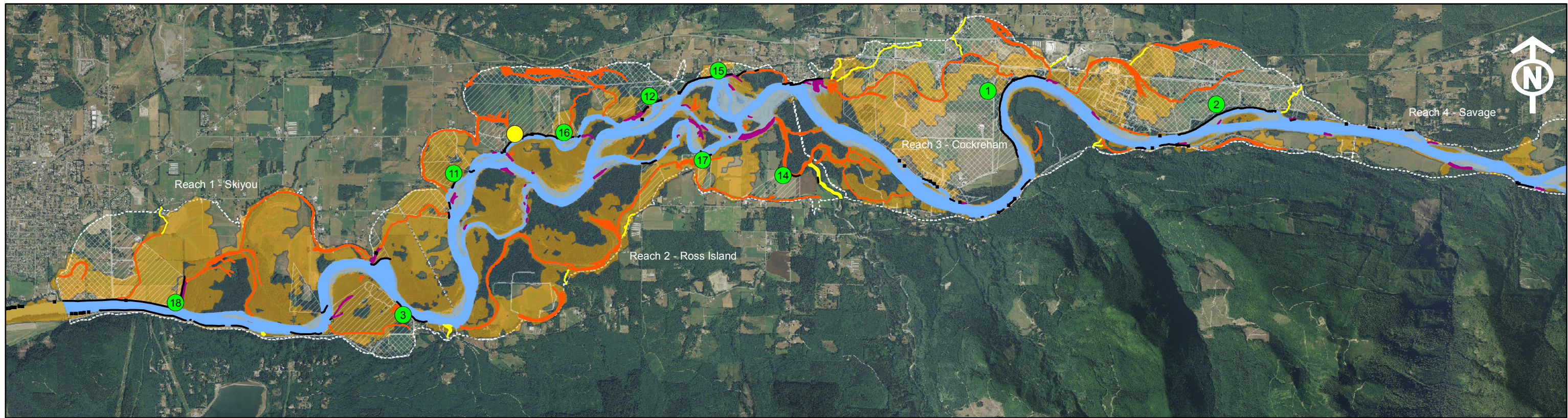


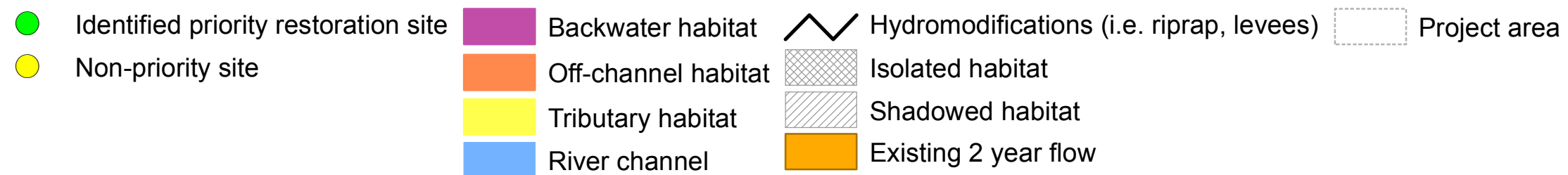
Map 2: Priority restoration sites for reconnecting isolated habitats

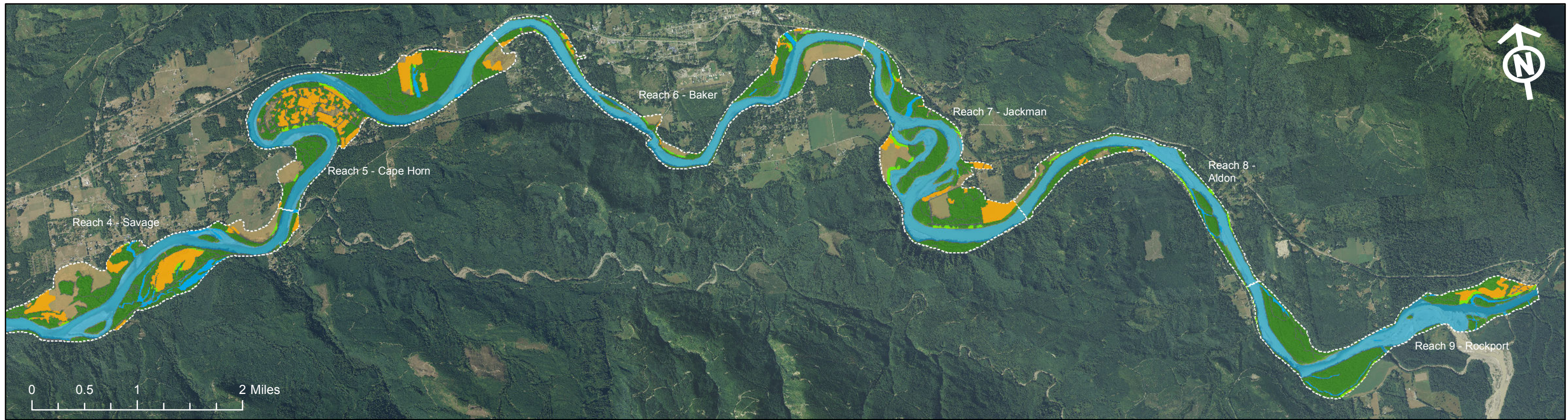
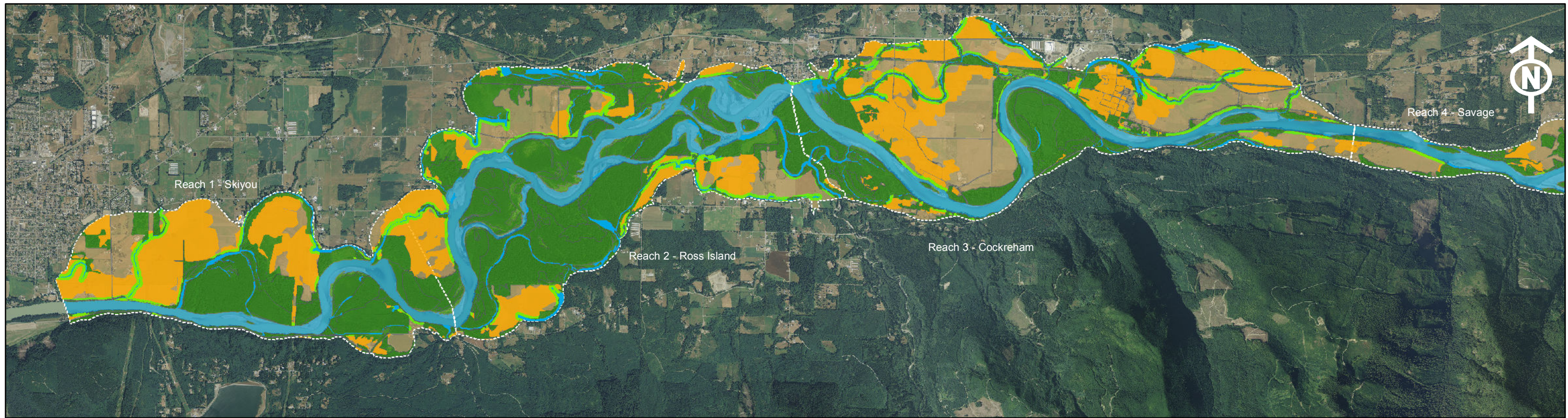
- | | | |
|--|--|--|
| ● Identified priority reconnection site | Backwater habitat | Hydromodifications (i.e. riprap, levees) |
| | Off-channel habitat | Roads |
| | Tributary habitat | Project area |
| | River channel | |





Map 4: Priority restoration sites for restoring floodplain habitat-forming processes





Map 5: Priority areas for riparian restoration

Unforested areas within 150' of existing habitat

Unforested areas inundated at 2-year flow

Existing habitat

Project area

Forested areas

Unforested areas